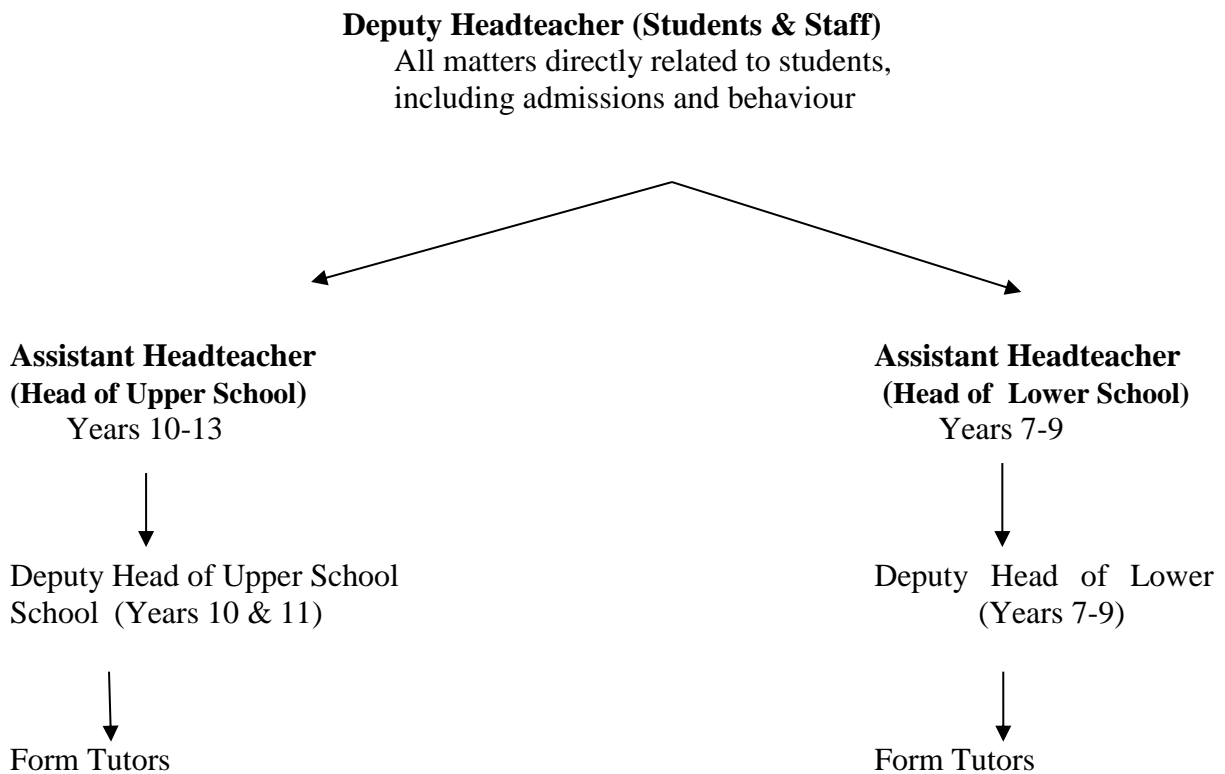


School Organisation and Pastoral Support

The school is led by the Headteacher, Mrs G Marshall, Mrs W Jackson, Deputy Headteacher (Pastoral & Staff), Mrs S Moss, Deputy Headteacher (Curriculum & Data) and the SLT.

The school is divided into groups each with an Assistant Headteacher. The two Assistant Headteachers have direct responsibility for their year groups and work with the Deputy Headteacher (Students & Staff)



In addition The Upper School is supported by a Careers Facilitator and Upper School Administration Assistant, and the Director of Extended Learning.

Students entering Year 7 are divided into four form groups.
Students currently remain in these groups until the end of Year 11.